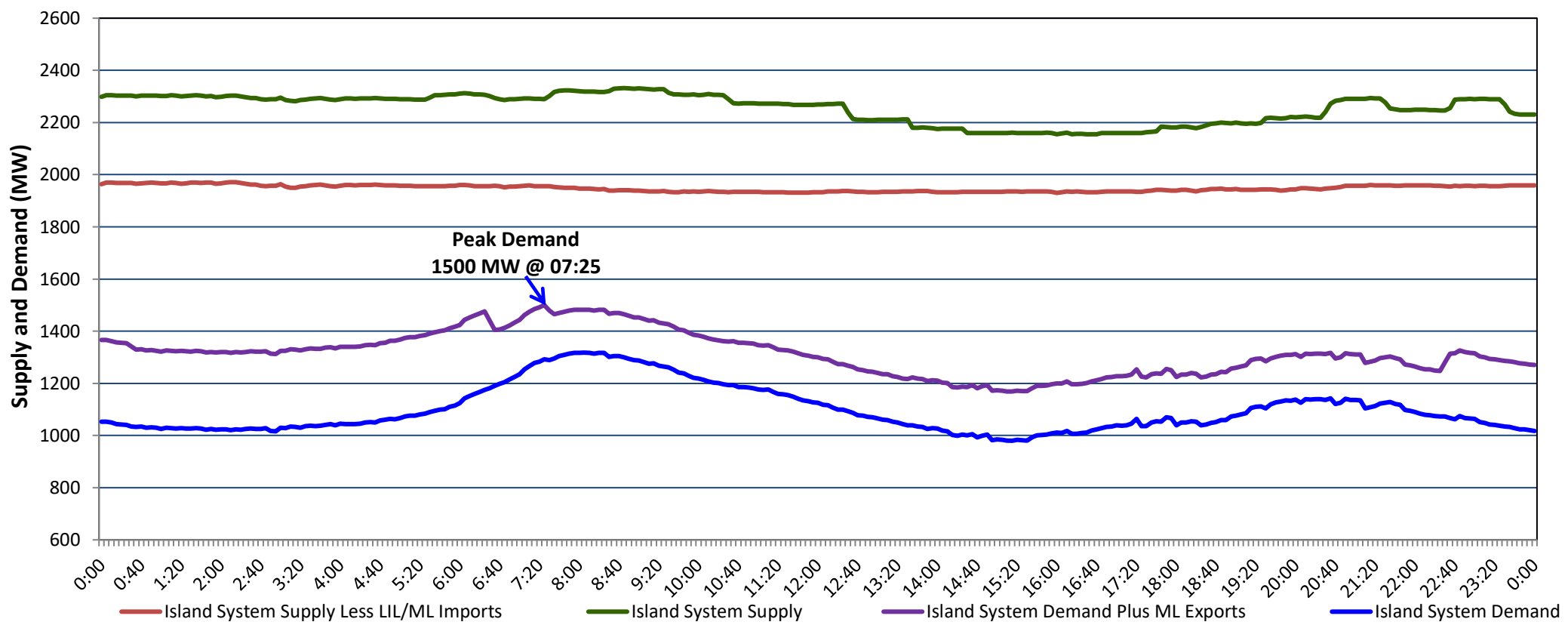


**Newfoundland Labrador Hydro (NLH)
Supply and Demand Status Report Filed Thursday, March 23, 2023**

**Section 1
Island Interconnected System Supply, Demand & Exports
Actual 24 Hour System Performance For Wednesday, March 22, 2023**



Supply Notes For March 22, 2023

1,2

A As of 0701 hours, March 06, 2023, Upper Salmon Unit unavailable due to planned outage (84 MW).

**Section 2
Island Interconnected Supply and Demand**

Thu, Mar 23, 2023	Island System Outlook ³	Seven-Day Forecast	Temperature (°C)		Island System Daily Peak Demand (MW)	
			Morning	Evening	Forecast	Adjusted ⁷
Available Island System Supply: ⁵	1,960 MW	Thursday, March 23, 2023	-4	-4	1,400	1,304
NLH Island Generation: ^{4,8}	1,610 MW	Friday, March 24, 2023	-3	-2	1,335	1,240
NLH Island Power Purchases: ⁶	130 MW	Saturday, March 25, 2023	0	0	1,300	1,205
Other Island Generation:	220 MW	Sunday, March 26, 2023	-1	1	1,285	1,190
ML/LIL Imports:	- MW	Monday, March 27, 2023	1	0	1,255	1,160
Current St. John's Temperature & Windchill:	-4 °C -12 °C	Tuesday, March 28, 2023	0	0	1,290	1,195
7-Day Island Peak Demand Forecast:	1,400 MW	Wednesday, March 29, 2023	0	0	1,280	1,185

Supply Notes For March 23, 2023

3

- Notes:
1. Generation outages for running and corrective maintenance are included. These are not unusual for power system operations. They generally do not impact customer supply. The power system operators schedule outages to system equipment whenever possible to coincide with periods when customer demands are low and sufficient supply reserves are available. However, from time to time equipment outages are necessary and reserves may be impacted.
 2. Due to the Island system having no synchronous connections to the larger North American grid, when there is a sudden loss of large generating units there may be a requirement for some customer's load to be interrupted for short periods to bring generation output equal to customer demand. This automatic action of power system protection, referred to as under frequency load shedding (UFLS), is necessary to ensure the integrity and reliability of system equipment. Under frequency events have typically occurred 5 to 8 times per year on the Island Interconnected System and the resultant customer load interruptions are generally less than 30 minutes. With the activation of the Maritime Link frequency controller during the winter of 2018, UFLS events have occurred less frequently.
 3. As of 0800 Hours.
 4. Gross output including station service at Holyrood (24.5 MW) and improved NLH hydraulic output due to water levels (35 MW).
 5. Gross output from all Island sources (including Note 4).
 6. NLH Island Power Purchases include: CBPP Co-Gen, Nalcor Exploits, Rattle Brook, Star Lake, Wind Generation and capacity assistance (when applicable).
 7. Adjusted for curtailable load, market activities and the impact of voltage reduction when applicable.
 8. Due to limitations inherent in the design of combustion turbines, the output of combustion turbines may be reduced in the event that ambient temperatures exceed the threshold

**Section 3
Island Peak Demand Information
Previous Day Actual Peak and Current Day Forecast Peak**

Wed, Mar 22, 2023	Actual Island Peak Demand ⁹	7:25	1,500 MW
Thu, Mar 23, 2023	Forecast Island Peak Demand		1,400 MW

Notes: 9. Island Demand / LIL / ML Exports (where applicable) is supplied by NLH generation and purchases, plus generation owned and operated by Newfoundland Power and Corner Brook Pulp & Paper (Deer Lake Power, DLP).